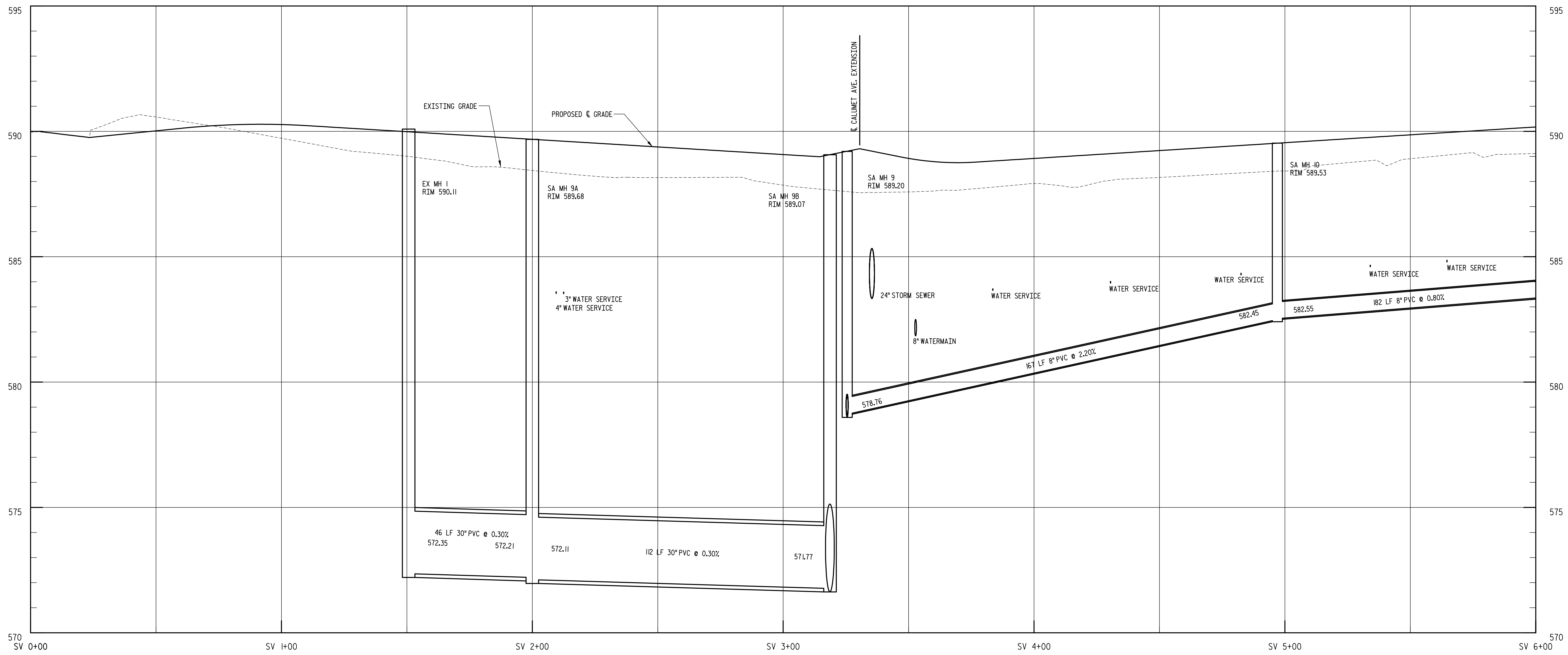
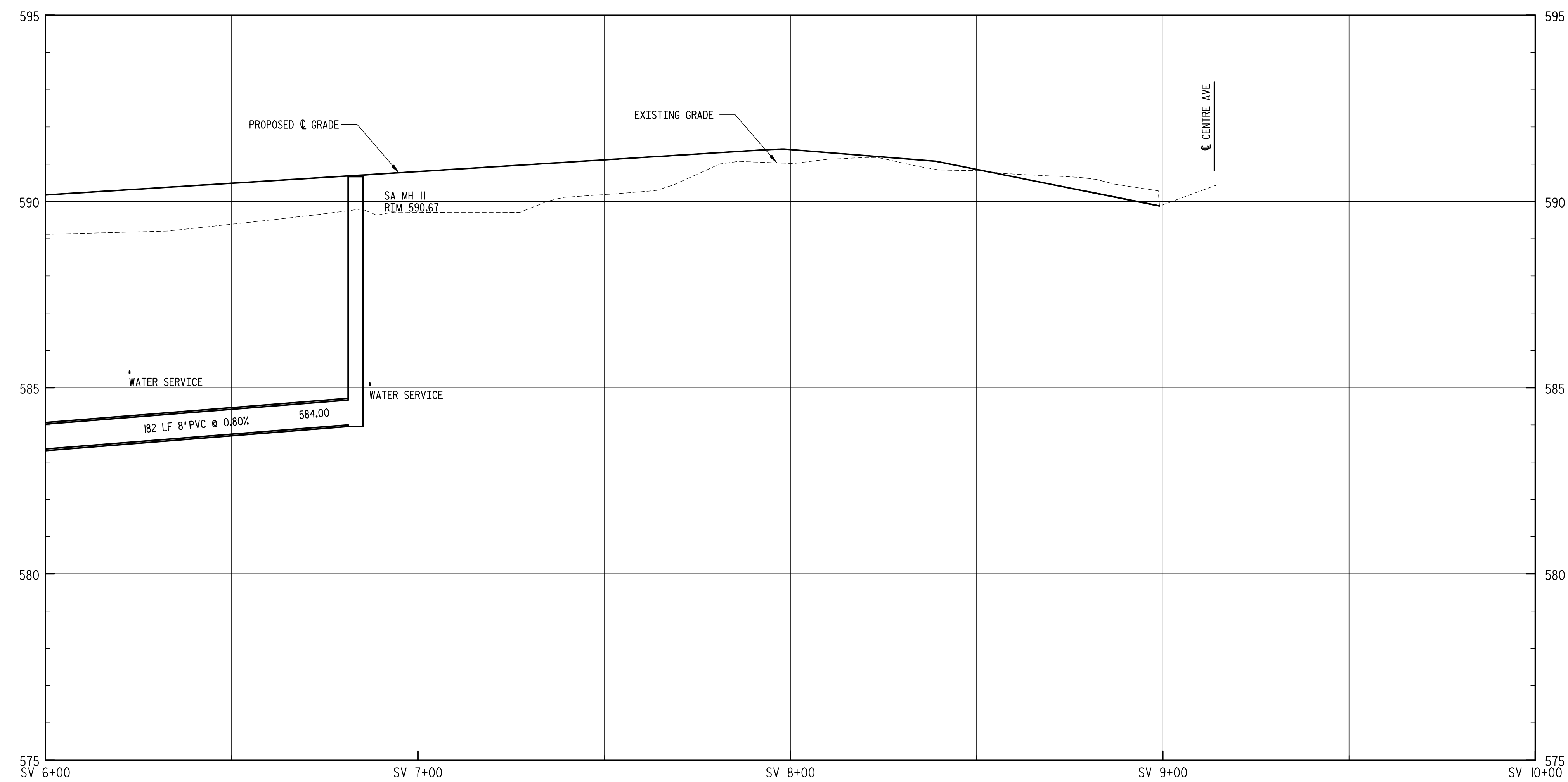


**SANITARY SEWER PROFILE
DIAMOND PARK LANE
CENTER COURT REVITALIZATION
NIAGARA FALLS, NEW YORK**



**DIAMOND PARK LANE
STA SV 0+00 TO SV 6+00**
HORIZONTAL SCALE: 1"=20'
VERTICAL SCALE: 1"=2'



**DIAMOND PARK LANE
STA SV 6+00 TO SV 10+00**
HORIZONTAL SCALE: 1"=20'
VERTICAL SCALE: 1"=2'

NOTE: SEE UTILITY PLANS
FOR ALL PIPE INVERTS AT MANHOLES
AND DRAINAGE STRUCTURES

REVISIONS		
MARK	DATE	DESCRIPTION
	07/07/07	REVIEW COMMENTS
	07/22/07	HOMEOWNERSHIP CHANGES
	11/20/07	REVISED ALLEY #1
	11/27/07	100% SUBMITTAL
	3/5/08	CONSTRUCTION DRAWINGS
	4/14/08	ROW/PL LINE REVISIONS
	6/26/08	RAISED GRADES
	8/22/08	H.O./RENTAL CHANGES

PROJECT NO: F58.001.001
CADD FILE NO: Z47BPS6.DGN
DATE: AUGUST 12, 2007
SCALE: AS NOTED
DRAWN BY: TEAM
CHECKED BY: L. DEWEY
NO ALTERATION PERMITTED HEREON
EXCEPT AS PROVIDED UNDER SECTION
7209 SUBDIVISION 2 OF THE NEW YORK
EDUCATION LAW