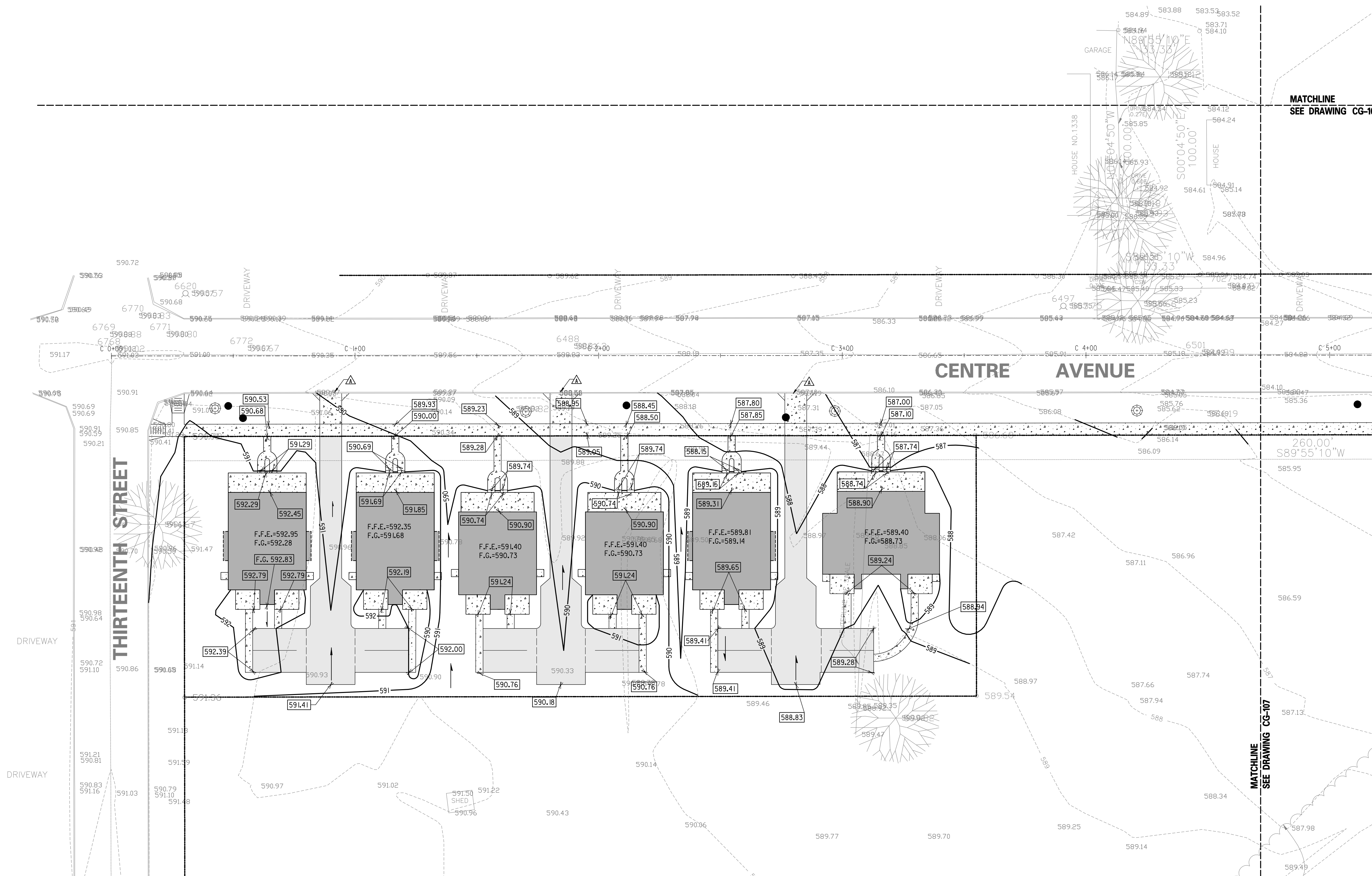
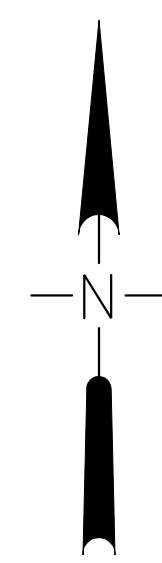


**GRADING PLAN**  
CENTER COURT REVITALIZATION  
NIAGARA FALLS, NEW YORK



**LEGEND**

- PROPERTY LINE
- SWALE/DIRECTION OF FLOW
- PROPOSED CONTOUR
- 585 — EXISTING CONTOUR
- 56.00 — FINISHED POINT ELEVATION
- TC — TOP OF CURB
- BC — BOTTOM OF CURB
- HP — HIGH POINT
- EP — EDGE OF PAVEMENT
- F.F.E. — FINISHED FLOOR ELEVATION
- — CATCH BASIN
- — MANHOLE

**NOTE LEGEND**

- ▲ MATCH GRADE AT SAWCUT W/TACK COAT
- ▼ DROP CURB AS NECESSARY. SEE CITY DETAIL.

**GENERAL NOTE**

1. SEE UTILITY PLANS FOR CATCH BASIN & MANHOLE RIM ELEVATIONS
2. ALL WORK SHALL BE PERFORMED IN ACCORDANCE WITH THE SOTIS MANAGEMENT PLAN (SMP). REFER TO THE SMP FOR LIMITS OF EXCAVATION FOR ALL EARTHWORK INCLUDING BUT NOT LIMITED TO REMOVAL OF MATERIAL, GRADING, TRENCHING AND BACKFILL.



| REVISIONS |          |                       |
|-----------|----------|-----------------------|
| MARK      | DATE     | DESCRIPTION           |
|           | 07/01/01 | REVIEW COMMENTS       |
|           | 07/22/01 | HOMEOWNERSHIP CHANGES |
|           | 11/20/01 | REVISED ALLEY #       |
|           | 11/27/01 | 100% SUBMITTAL        |
|           | 3/5/08   | CONSTRUCTION DRAWINGS |
|           | 4/14/08  | ROW/PL LINE REVISIONS |

|  |
|--|
| PROJECT NO: F58.001.001  |
| CADD FILE NO:  |
| DATE: AUGUST 12, 2007  |
| SCALE: AS NOTED  |
| DRAWN BY: TEAM   |
| CHECKED BY: L. DEWEY   |
| NO ALTERATION PERMITTED HEREON EXCEPT AS PROVIDED UNDER SECTION 7209 SUBDIVISION 2 OF THE NEW YORK EDUCATION LAW |