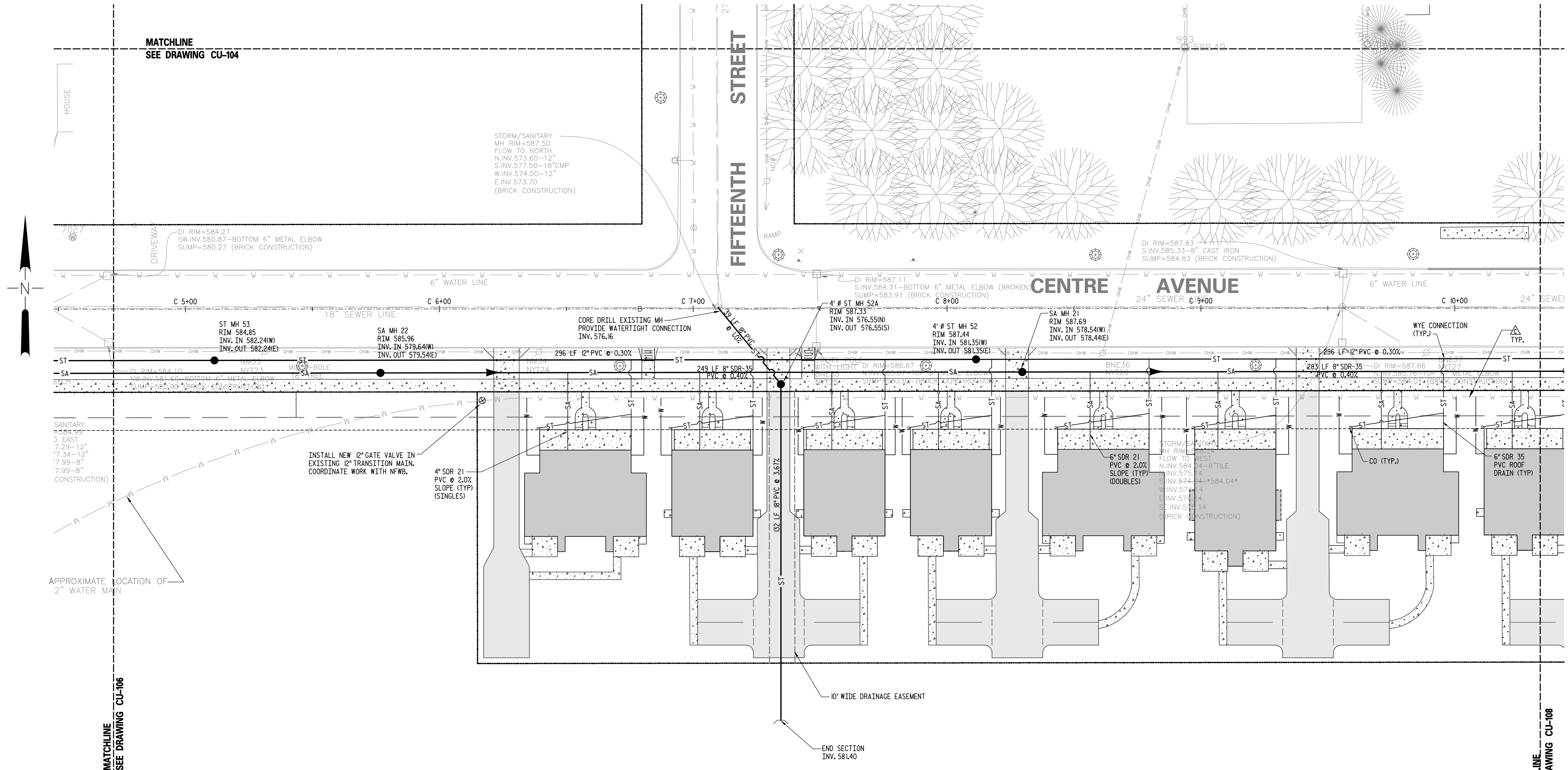


UTILITY PLAN
CENTER COURT REVITALIZATION
NIAGARA FALLS, NEW YORK

REVISIONS		
MARK	DATE	DESCRIPTION
	07/20/07	REVIEW COMMENTS
	07/22/07	HOMEOWNERSHIP CHANGES
	11/20/07	REVISED ALLEY #1
	11/27/07	100% SUBMITTAL
	3/5/08	CONSTRUCTION DRAWINGS
	4/14/08	ROW/PL LINE REVISIONS

PROJECT NO: F58.001.001
CADD FILE NO: 247B24.DGN
DATE: AUGUST 12, 2007
SCALE: AS NOTED
DRAWN BY: TEAM
CHECKED BY: L. DEWEY
NO ALTERATION PERMITTED HEREON EXCEPT AS PROVIDED UNDER SECTION 7209 SUBDIVISION 2 OF THE NEW YORK EDUCATION LAW



- LEGEND**
- PROPERTY LINE
 - SA — PROPOSED SANITARY SEWER
 - ST — PROPOSED STORM SEWER
 - W — PROPOSED WATER MAIN
 - CATCH BASIN
 - YD YARD DRAIN
 - M MANHOLE
 - HU HYDRANT UNIT COMPLETE
 - ⊗ WV WATER VALVE
 - C CLEANOUT
 - ☉ LIGHT STANDARD (SHOWN IN APPROXIMATE LOCATIONS, SET + SPACING, CONTACT NATIONAL GRID & THE CITY OF NIAGARA FALLS FOR FINAL POLE PLACEMENT BEFORE START OF CONSTRUCTION)

- NOTE LEGEND**
- △ INSTALL 20" x 8" TEE AND VALVE, COORDINATE INSTALLATION WITH NIAGARA FALLS WATER BOARD.
 - △ CONSTRUCT DOGHOUSE MANHOLE OVER EXISTING SEWER LINE.
 - △ INSTALL TAP IN EXISTING WATER MAIN, COORDINATE WORK WITH THE NIAGARA FALLS WATER BOARD APPROVAL.
 - △ CONNECT NEW SANITARY LATERAL WITH WYE CONNECTIONS TO EXISTING COMBINED SEWER, COORDINATE WORK WITH THE NIAGARA FALLS WATER BOARD.
 - △ INSTALL STORM AND SANITARY SEWER MANHOLES AND PIPING AS PART OF PHASE I.

- GENERAL NOTES:**
- ALL SANITARY SEWER PIPE INCLUDING SERVICE LATERALS TO BE SDR-35 PVC.
 - WATER SERVICES TO BE 1" TYPE "K" COPPER
 - ALL STORM SEWER PIPE INCLUDING LATERALS TO BE SDR-35 PVC
 - ALL WATER MAIN TO BE 8" CL52 DUCTILE IRON.
 - WATER, SANITARY AND STORM CONNECTION POINTS SHOWN ARE APPROXIMATE. COORDINATE WITH PLUMBING PLANS FOR EXACT POINTS OF CONNECTION.
 - ALL WORK TO BE COMPLETED IN ACCORDANCE W/ THE CITY OF NIAGARA FALLS AND NIAGARA FALLS WATER BOARD STANDARDS. SEE SPECIFICATIONS FOR CHLORINATION & TESTING OF WATERMAINS, MANHOLE & LEAKAGE TESTING FOR SANITARY SEWERS. OBTAIN ALL PERMITS PRIOR TO THE START OF CONSTRUCTION.
 - STORM SEWER LATERALS ARE 6" DIA. @ 1.0% MIN. SLOPE. SANITARY SEWER LATERALS ARE 4" DIA. @ 2.0% FROM EACH UNIT, THEN 6" DIA. @ 1.0% MIN. TO SEWER MAIN FOR DUPLEX UNITS. ALL CONNECTIONS TO MAIN TO BE MADE WITH WYE FITTINGS.
 - WATER, SANITARY AND STORM LATERALS SHOWN TO HOUSES ARE SCHEMATIC AND CAN BE ADJUSTED IN ORDER TO PRESERVE MATURE TREES. SEE PLUMBING PLANS FOR POINTS OF CONNECTIONS AT FOUNDATION WALLS.
 - CONFIRM MANHOLE DIMENSIONS WITH FABRICATORS, SUBMIT SHOP DRAWINGS BEFORE ORDERING.
 - ALL WORK SHALL BE PERFORMED IN ACCORDANCE WITH THE SOILS MANAGEMENT PLAN (SMP). REFER TO THE SMP FOR LIMITS OF EXCAVATION FOR ALL EARTHWORK INCLUDING BUT NOT LIMITED TO REMOVAL OF MATERIAL, GRADING, TRENCHING AND BACKFILL.

