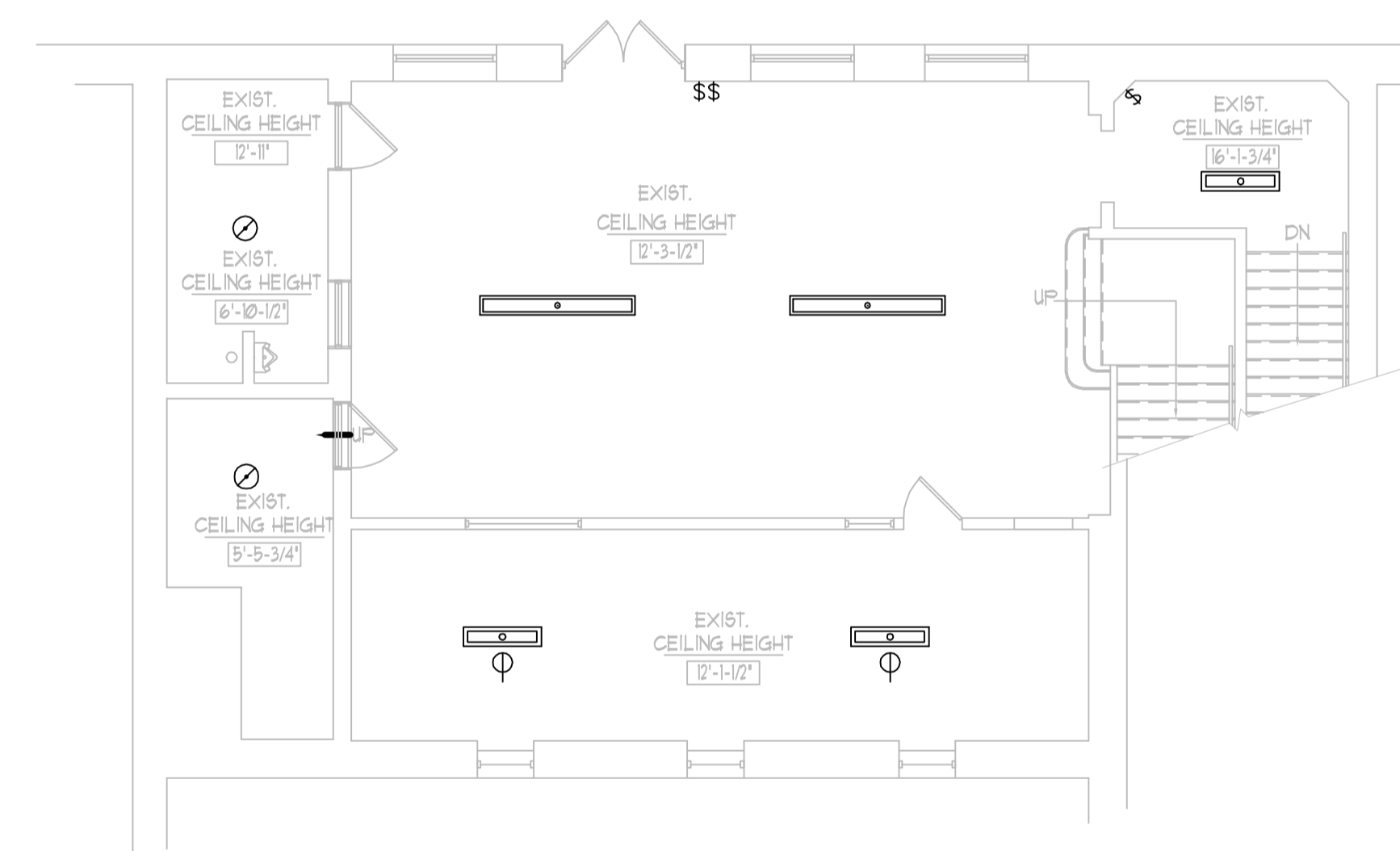


**(A) ELECTRICAL DEMOLITION SECOND FLOOR PLAN**  
SCALE: 1/8" = 1'-0"



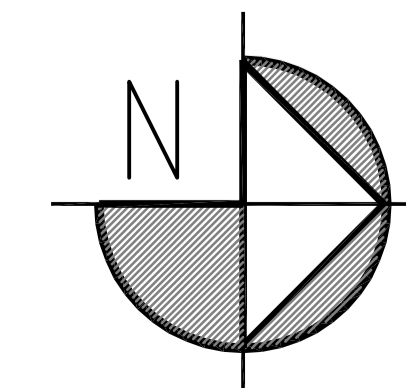
**(B) ELECTRICAL DEMOLITION FIRST FLOOR RAISED PLAN**  
SCALE: 1/8" = 1'-0"

**DRAWING NOTES:**

- 1 REMOVE EXISTING LIGHT FIXTURES. TYPICAL FOR THE ENTIRE FLOOR.
- 2 REMOVE EXISTING PA SYSTEM INTERCOM. TYPICAL FOR THE ENTIRE FLOOR.
- 3 REMOVE EXISTING FIRE ALARM SYSTEM DEVICE. TYPICAL FOR THE ENTIRE FLOOR.
- 4 REMOVE EXISTING EXIT SIGN. TYPICAL FOR THE ENTIRE FLOOR.
- 5 REMOVE EXISTING LOAD CENTER/PANELBOARD.

**GENERAL NOTES:**

- 1. DISCONNECT AND REMOVE ALL EXISTING ELECTRICAL EQUIPMENT AND ASSOCIATED SUPPORTS AND CONTROLS, BOXES, CONDUIT, WIRE, ETC., WHERE INDICATED OR WHERE LOCATED ON OR WITHIN WALLS, CEILINGS, TO BE REMOVED, UNLESS OTHERWISE INDICATED.
- 2. REMOVE ALL EXTERIOR MOUNTED CONDUITS AND CONDUCTORS.



**NOTICE**

This document, the property of, prepared and issued by the architect, is submitted for the specific project named and the recipient by accepting this document assumes custody and agrees that this document will not be copied or reproduced in part or in whole, and any special features peculiar to this design shall not be incorporated in any other project, unless prior agreement has been obtained in writing. These documents will be returned immediately upon completion of the project or upon the request of the architect.

This document is the exclusive property of the architect, no rights to ownership are transferable, or shall be lost by the filing of this document with any and all public authorities for the purpose of compliance with Codes and Ordinances, i.e. Building Permit, etc.

**ERDMAN ANTHONY**

2165 Brighton Henrietta Town Line Rd.  
Rochester, NY 14623-2755  
Telephone 585 427 8866  
Facsimile 585 427 8914  
www.erdmananthony.com

**CHURCH OF THE HOLY FAMILY SENIOR APARTMENTS**

920 TIFFT ST.  
BUFFALO, NY 14220

**REVISIONS:**

SA PROJECT TEAM: PRINCIPAL P. Silvestri  
SR ARCH. JR ARCH.  
DRAWN BY MT CHECKED BY PR

**SEAL:**

**TITLE:**

**ELECTRICAL DEMOLITION SECOND FLOOR PLAN**



**SILVESTRI ARCHITECTS · PC**

80 PINEVIEW DRIVE PH. 716.691.0900  
AMHERST, NY 14228 FAX 716.691.4773

SA JOB #: 04312 DATE: 12-11-09

DRAWING #: ED-102