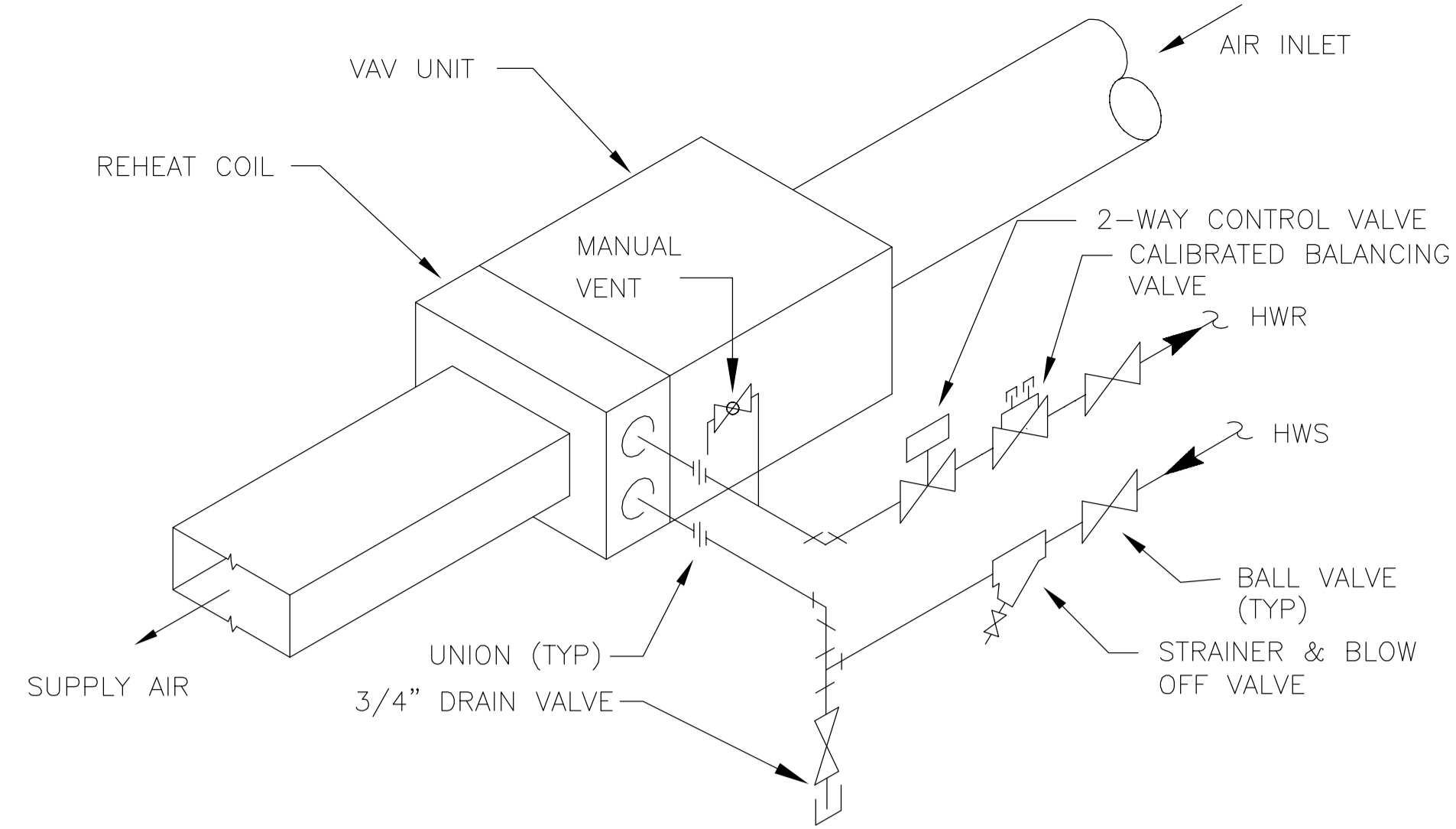
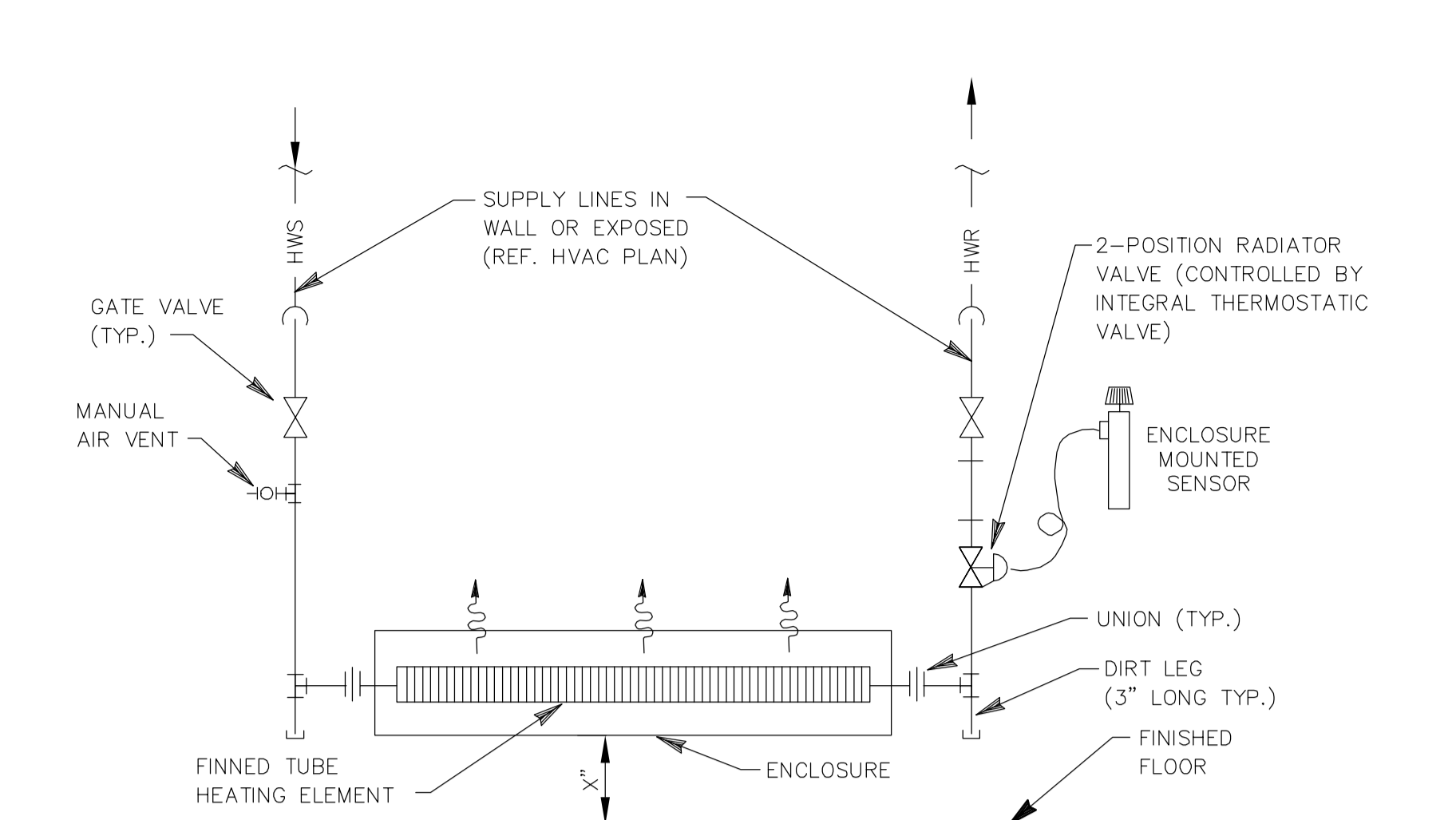


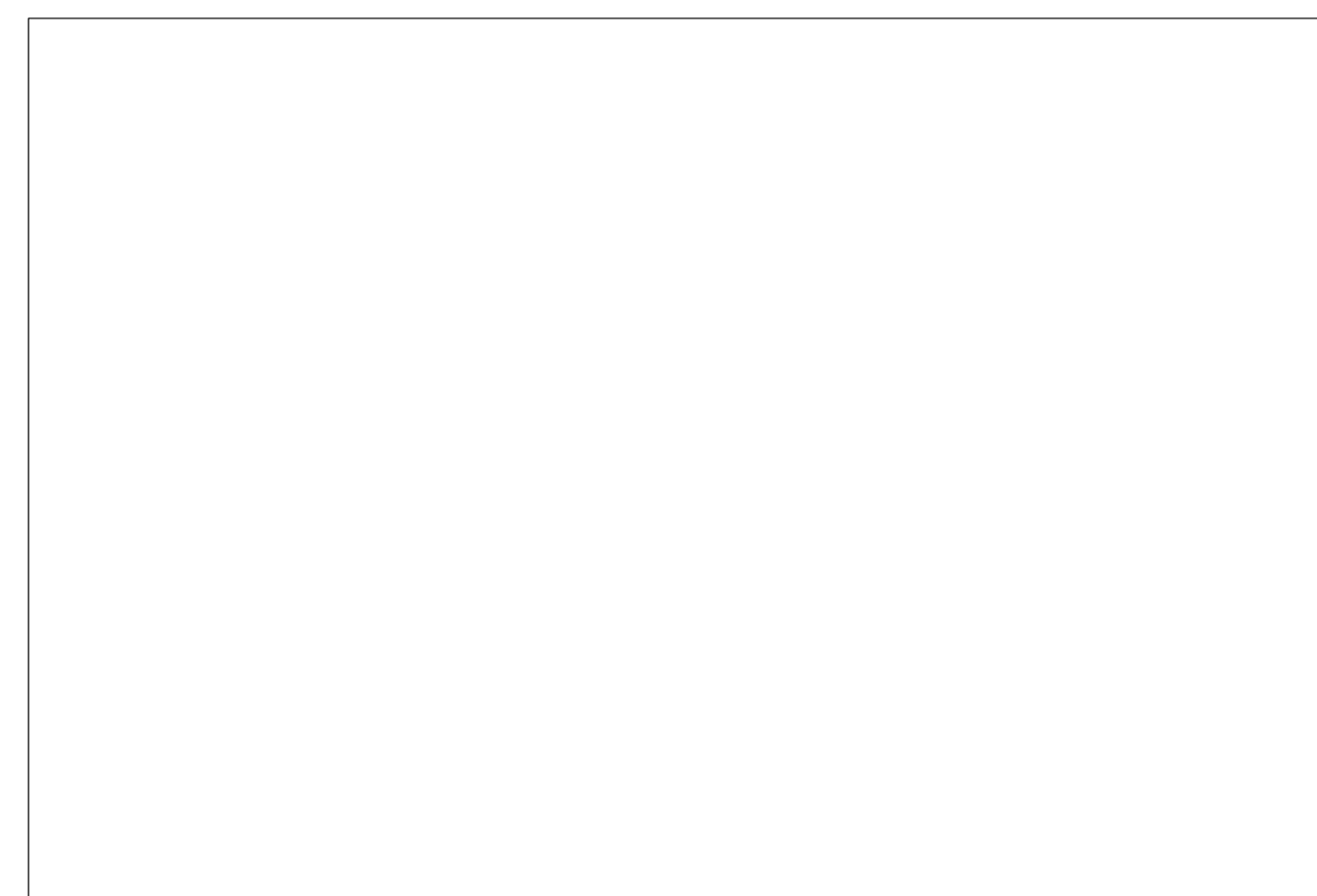
A HOT WATER HEATING
EXPANSION TANK WITH AIR SEPARATOR (AS-1 & ET-1)
 SCALE: NONE



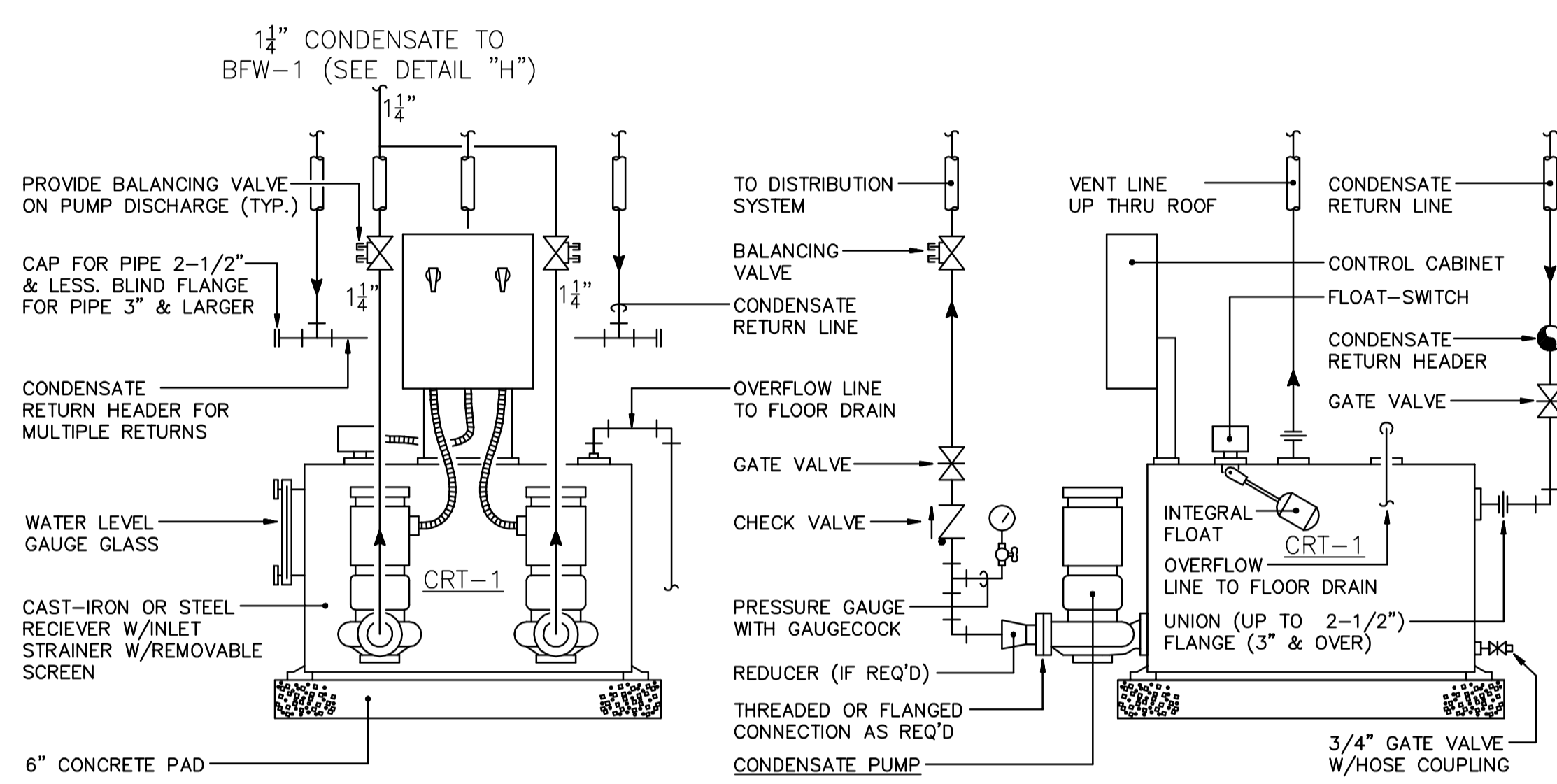
B VAV UNIT WITH REHEAT COIL
 SCALE: NONE



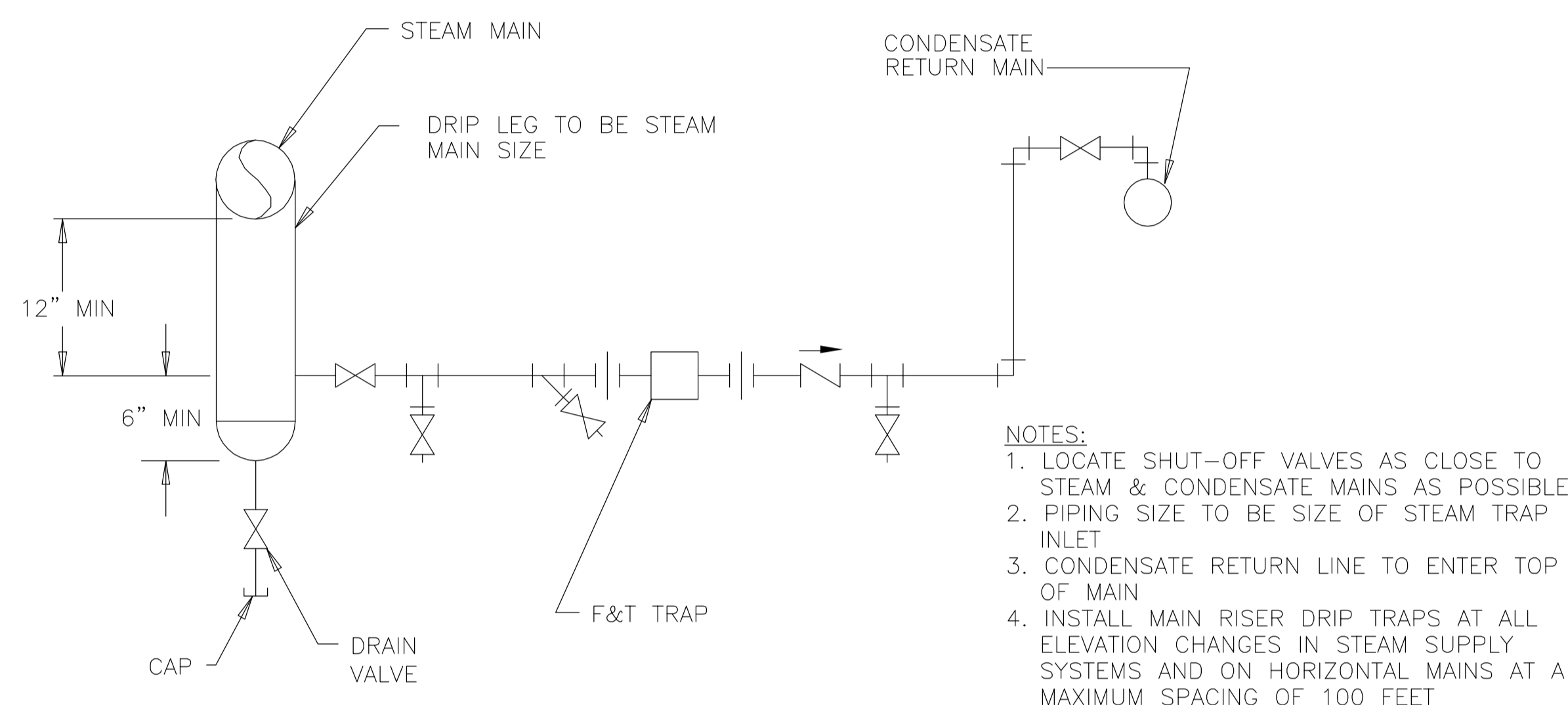
C FIN TUBE INSTALLATION DETAIL
 SCALE: NONE



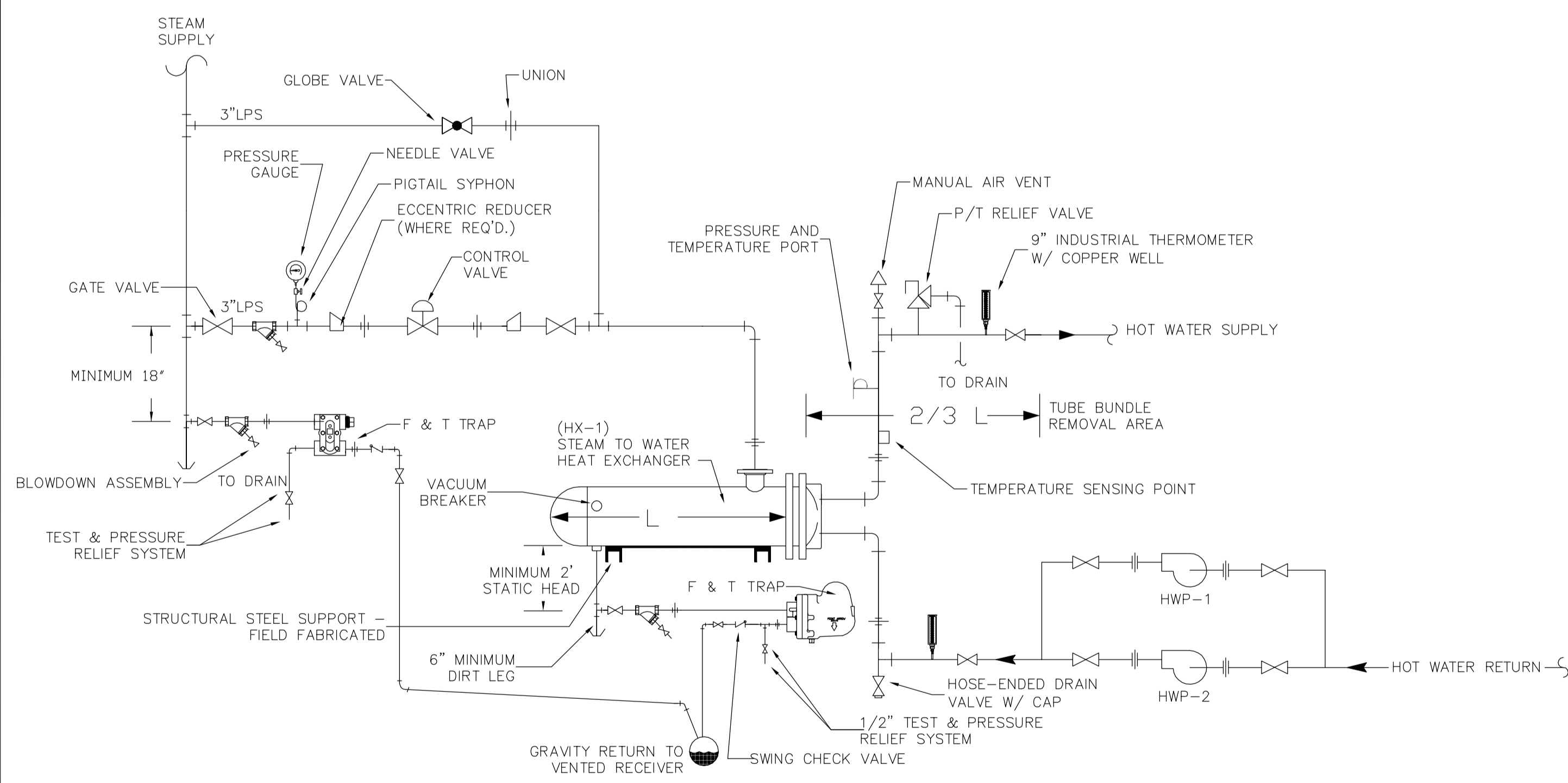
D NOT USED
 SCALE: NONE



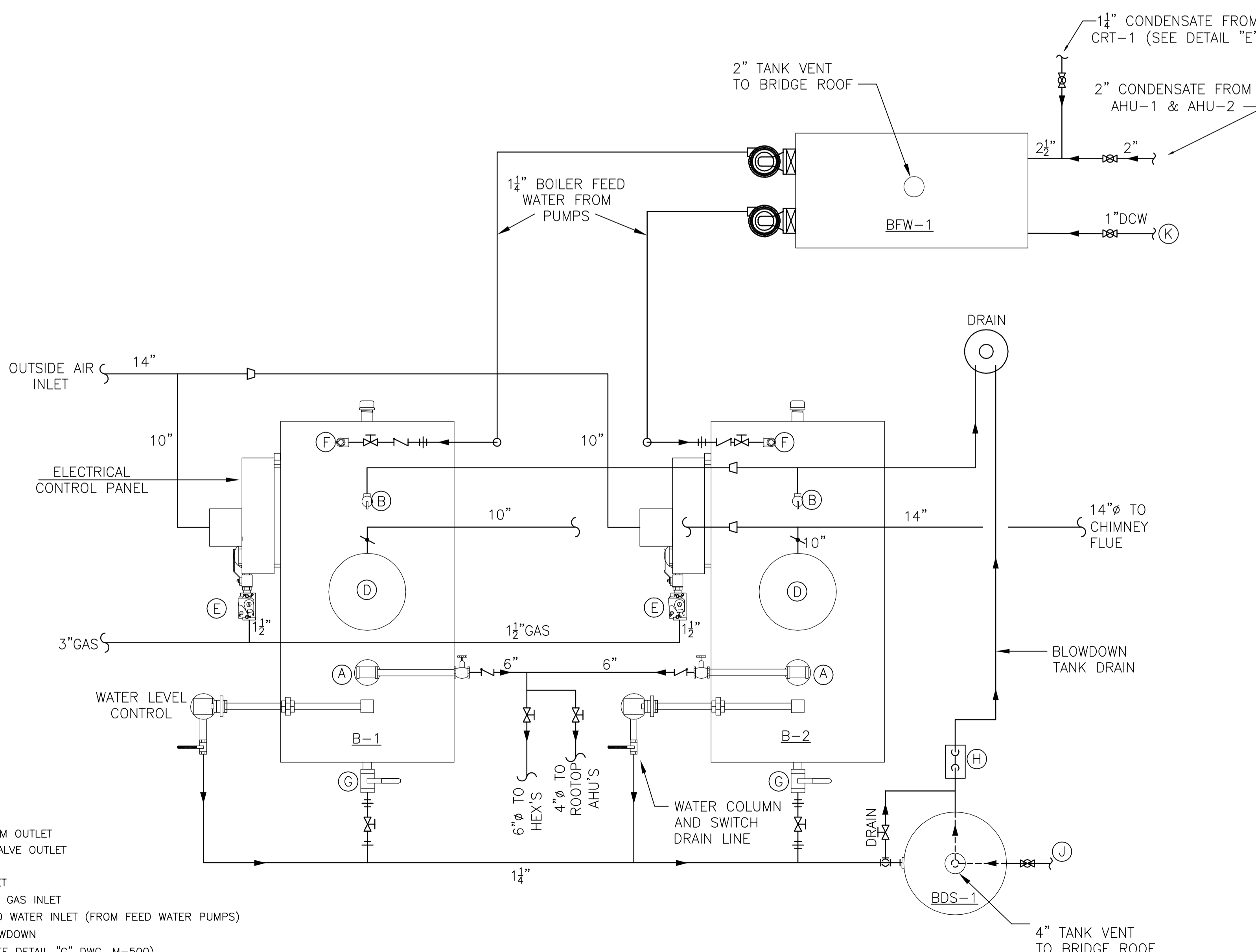
E CONDENSATE PUMP AND RECEIVER (CRT-1)
 SCALE: NONE



F STEAM TRAP INSTALLATION
 SCALE: NONE



G STEAM TO HOT WATER HEATING HEAT EXCHANGER PIPING ARRANGEMENT (HX-1)
 SCALE: NONE



- (A) - 6" FLANGED STEAM OUTLET
- (B) - 2" NPT RELIEF VALVE OUTLET
- (C) - 6" BLOWER INLET
- (D) - 10" STACK OUTLET
- (E) - 1 1/2" NPT NAT. GAS INLET
- (F) - 1 1/4" NPT FEED WATER INLET (FROM FEED WATER PUMPS)
- (G) - 1 1/4" NPT BLOWDOWN
- (H) - DRAIN KOOLER (SEE DETAIL "G" DWG. M-500)
- (I) - 1" DOMESTIC COLD WTR (DCW) TO BDS-1 (SEE DWG. P-101)
- (K) - 1" DOMESTIC COLD WTR (DCW) TO BFW-1 (SEE DWG. P-101)

H TYPICAL BOILER HOOK-UP DETAIL (B-1, B-2, BFW-1 & BDS-1)
 SCALE: 1/4" = 1'-0"

NOTICE

This document, the property of, prepared and issued by the architect, is submitted for the specific project named and the recipient by accepting this document assumes custody and agrees that this document will not be copied or reproduced in part or in whole, and any special features peculiar to this design shall not be incorporated in any other project, unless prior agreement has been obtained in writing. These documents will be returned immediately upon completion of the project or upon the request of the architect.

This document is the exclusive property of the architect, no rights to ownership are transferable, or shall be lost by the filing of this document with any and all public authorities for the purpose of compliance with Codes and or Ordinances, i.e. Building Terms, etc.

ERDMAN ANTHONY

2165 Brighton Henrietta Town Line Rd.
 Rochester, NY 14623-2755
 Telephone 585 427 8866
 Facsimile 585 427 8914
 www.erdmananthony.com

CHURCH OF THE HOLY FAMILY SENIOR APARTMENTS

920 TIFFT ST.
 BUFFALO, NY 14220

REVISIONS:

1. LOCATE SHUT-OFF VALVES AS CLOSE TO STEAM & CONDENSATE MAINS AS POSSIBLE
2. PIPING SIZE TO BE SIZE OF STEAM TRAP INLET
3. CONDENSATE RETURN LINE TO ENTER TOP OF MAIN
4. INSTALL MAIN RISER DRIP TRAPS AT ALL ELEVATION CHANGES IN STEAM SUPPLY SYSTEMS AND ON HORIZONTAL MAINS AT A MAXIMUM SPACING OF 100 FEET

SA PROJECT TEAM:	PRINCIPAL P. Silvestri
SR ARCH:	JR ARCH
DRAWN BY:	TRA
CHECKED BY:	MMB



MECHANICAL DETAILS

SILVESTRI ARCHITECTS · PC

80 PINEVIEW DRIVE PH. 716.691.0900
 AMHERST, NY 14228 FAX 716.691.4773

SA JOB #:	DATE:
04312	12-11-09

DRAWING #:
M-501