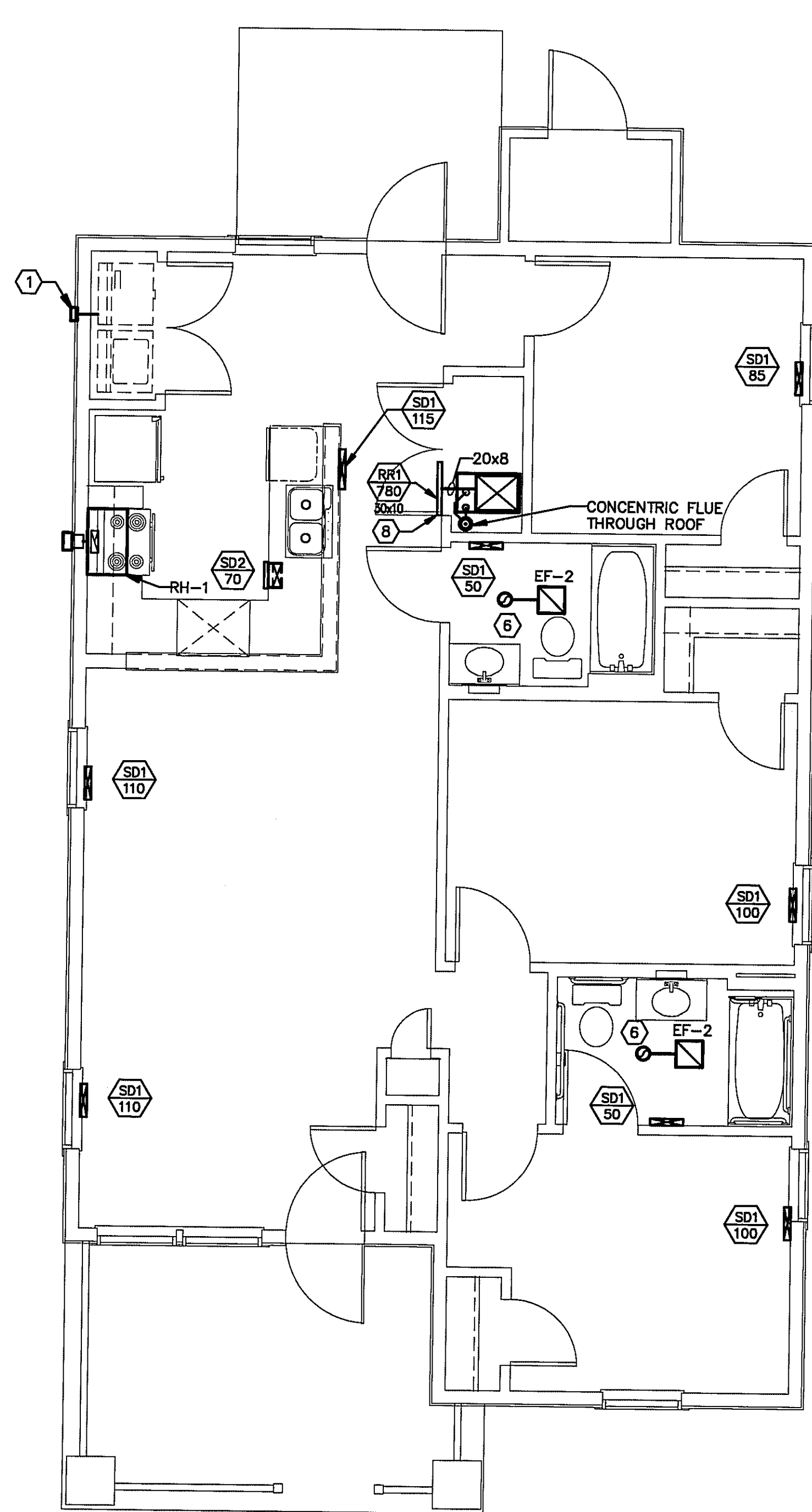
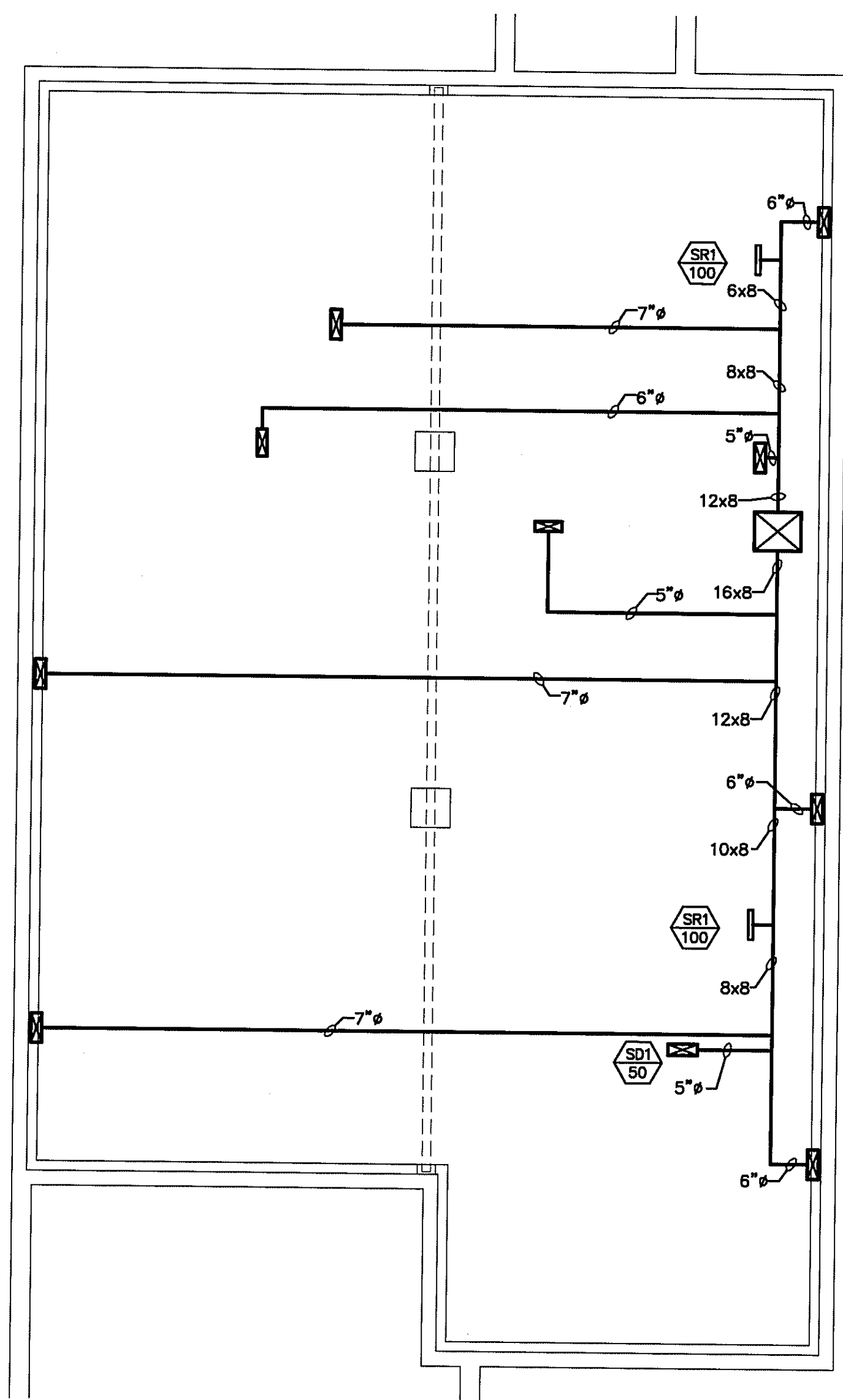


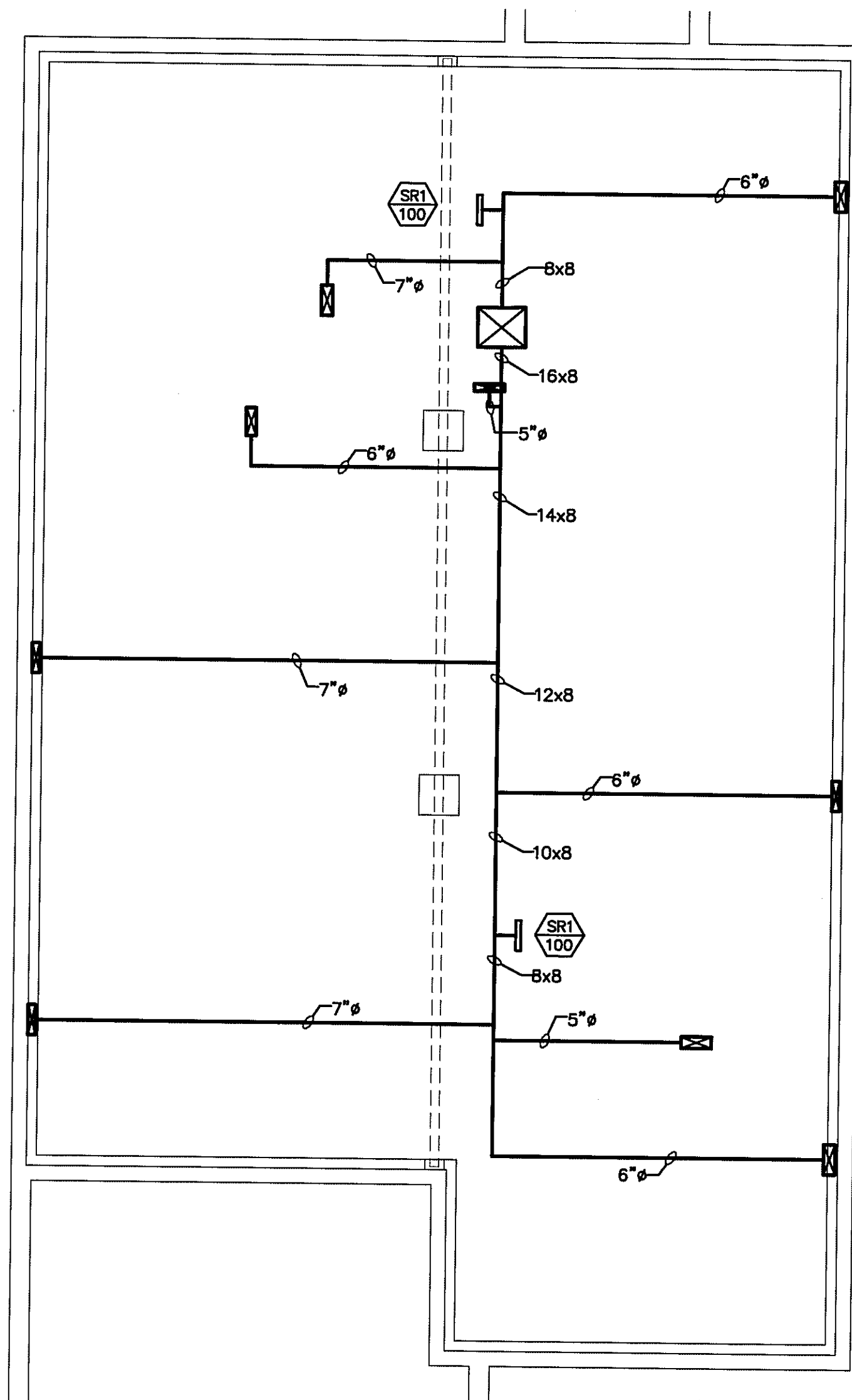
FIRST FLOOR TYPE E RENTAL - MECHANICAL
SCALE: 1/4" = 1'-0"



FIRST FLOOR TYPE E1 HOME OWNERSHIP - MECHANICAL
SCALE: 1/4" = 1'-0"



CRAWL SPACE TYPE E RENTAL - MECHANICAL
SCALE: 1/4" = 1'-0"



CRAWL SPACE TYPE E1 HOME OWNERSHIP - MECHANICAL
SCALE: 1/4" = 1'-0"

PLAN NOTES

1. DRYER VENT DISCHARGE COORDINATE EXACT LOCATION WITH EQUIPMENT.
2. CONCENTRIC FLUE TERMINATION KIT.
3. FLOOR MOUNTED DIFFUSER. TYPICAL.
4. DUCT ABOVE FIRST FLOOR CEILING SERVING THE SECOND FLOOR UNIT. FIRESTOP AROUND ALL FLOOR PENETRATIONS.
5. WALL DISCHARGE CAP FOR EXHAUST FAN. SEE EXHAUST FAN SCHEDULE FOR ADDITIONAL INFORMATION.
6. EXHAUST DUCT UP TO PITCHED ROOF CAP WITH BIRD SCREEN AND BACKDRAFT DAMPER.
7. PROVIDE PRE-CHARGED, CAPPED, REFRIGERANT LINE SET FOR FUTURE COOLING. SIZED PER MANUFACTURER'S RECOMMENDATIONS FOR 2 TONS OF COOLING USING R-410A AT A LENGTH DETERMINED BY FIELD MEASUREMENT. EXTEND PIPING INTO CRAWL SPACE AND MECHANICAL ROOM. DO NOT CUT PIPING OR EXPOSE TO ATMOSPHERE.
8. RETURN REGISTER HIGH IN WALL. MOUNT AT 1" BELOW CEILING TO TOP EDGE OF REGISTER.
9. RIGHT SIDE IS MIRROR IMAGE OF LEFT.



STIEGLITZ SNYDER
ARCHITECTURE

425 FRANKLIN STREET
BUFFALO, NEW YORK 14202
716.854.9166
www.stieglitzsnyder.com

CONSULTANTS
Torfi Gallos and Partners, Inc.
1300 Spring Street,
4th Floor
Silver Spring, MD 20910
301.588.4800
www.torfigalloschk.com

Structural Engineer
Jensen-Kiener Consulting
Engineers
429 Franklin Street
Buffalo, NY 14202
(716) 854-3308 T.
(716) 854-1984 F.

MEP Engineer
Buffalo Engineering, P.C.
4245 Union Road, Suite 204
Buffalo, NY 14225
(716) 633-5300 T.
(716) 633-5598 F.
Project #: 206145

Civil Engineer and Landscape
C & S Engineering
90 Broadway Ave
Buffalo, NY 14203

CENTER COURT REVITALIZATION
Niagara Falls, New York

STIEGLITZ SNYDER ARCHITECTURE PROJECT 06.21

STIEGLITZ SNYDER ARCHITECTURE RESERVES ALL OWNERSHIP RIGHTS, INCLUDING COPYRIGHT, OF THE DOCUMENTS AND THE CONTENTS THEREOF. ANY USE OR REPRODUCTION THEREOF WITHOUT THE WRITTEN PERMISSION OF STIEGLITZ SNYDER ARCHITECTURE WILL BE PROSECUTED TO THE FULLEST EXTENT PERMITTED BY LAW AND FURTHERMORE, STIEGLITZ SNYDER ARCHITECTURE, ITS OFFICES, AGENTS AND EMPLOYEES SHALL BE HOLDING RESPONSIBLE AND WILL HOLD OTHERS FROM ANY AND ALL CLAIMS, SUITS, DAMAGES OR COSTS, INCLUDING REASONABLE ATTORNEY'S FEES ARISING OUT OF OR RELATING THEREFROM.

REVISIONS	

DRAWN BY BMW	CHECKED BY
SCALE AS NOTED	
DATE Nov. 14, 2007	

UNIT TYPE E
MECHANICAL PLANS

M101E